



## Waste Management - Increasing the regional co-operation

**Göran Lundberg**  
Operational Manager/ Sustainable  
Regional Growth and Development



## ***KSL - 26 municipalities in co-operation***

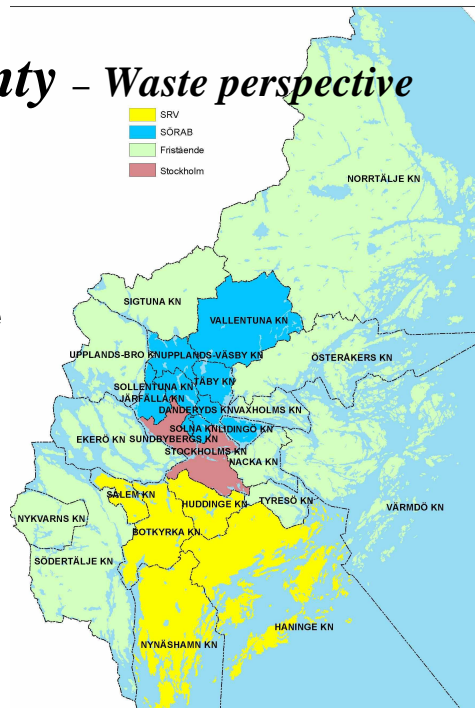
---

- support and develop municipal autonomy
- safeguard municipal interests
- promote cooperation between municipalities
- assist municipal operations



## *Stockholm County – Waste perspective*

- N→S ≈ 250 km
- 1,9 million
- 73 % in apartments
- 2 Municipality Owned Waste Companies
- Private Waste Companies
- Functional region  
> Stockholm County

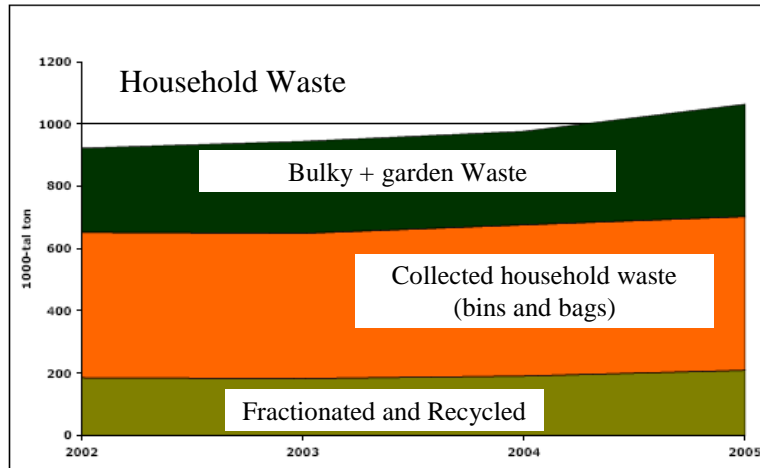


## *Different actors*

- Municipal responsibility;  
Household Waste
- Producer responsibility;  
Packaging, paper, WEEE etc



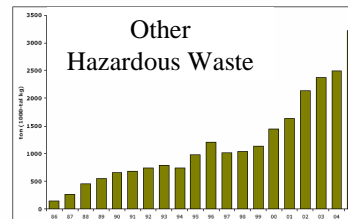
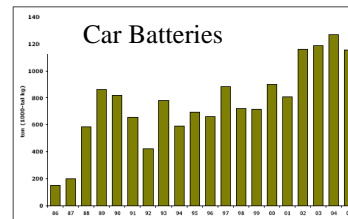
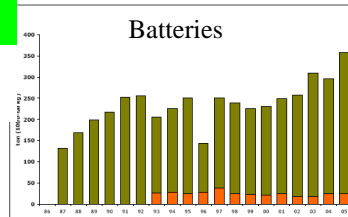
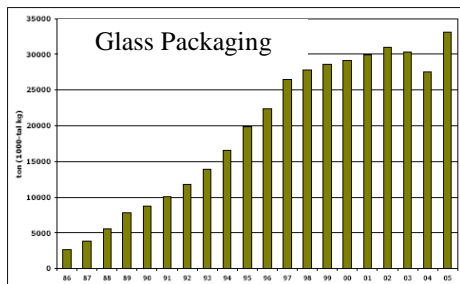
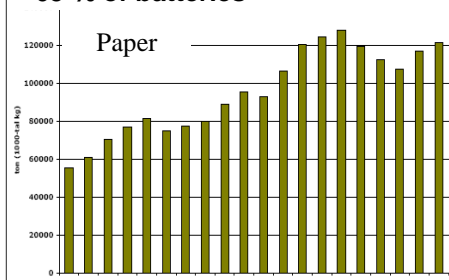
# Stockholm County – Trends



## INCREASING RECOVERY:

77,5 % of paper and packages

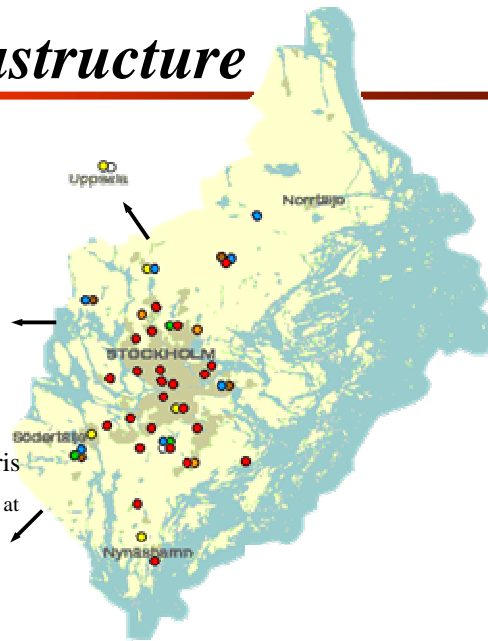
~65 % of batteries



## Waste infrastructure

- Major Recycling Centers
- Landfills
- Waste incineration Plants
- Composting Plants
- Biogas Plants\*
- Polluted soil treatment
- Soil and Construction Debris

\* Waste only, sludge are digested at the Wastewater treatment plants



## The Regional Co-operation

### ■ Started 1979 as a Counter Action:

- the County Council wanted a Regional Waste Company
- the municipalities defended their independence

-----  
=> The Waste Co-operation Comitté in the Stockholm County



- 
- "Discussion Network" +  
2 Regional Information Campaigns
  - Waste still a "symbol of independence", thus >20 different  
systems in the county
- ...but...
- Local politicians "troubled" by Public complaints of waste  
system
  - Regional lifestyle  
- "no municipal boundaries"



**Time for a restart!**



## ***The restart of the Regional Co-op***

- Regional Waste study ordered
- Accepted by the Municipal Waste  
organisations, but ...
- low interest ("no use for us")

-----

⇒ How increase the interest and  
create a "Win-Win"?



## ***Receipe: Strong Region Co-op***

---

### **Strategic approach:**

- **Interested and engaged target groups:**
  - Decision Makers in the Waste Organisations
  - Regional Municipal Politicians (bridge to local politicians)
  - Executive staff
- **Regional "Authority" (KSL) as a hub**
  - Creates wider acceptance
  - Catalyst + provides administrative and political support /
- **Joint View achived by working together in projects**
  - A Common Regional Identity
  - Accepting local differencies
  - Using specific knowledge in local organisations



## ***Methods***

---

- **New name: Stockholm Region Waste Council**
- **Strategic Action Programme**
- **Workgroups**
  - Base: internal competence
  - Clarify: Task is part of holistic strategies
  - Consultant support if neccessary
  - Clear Cut Conditions (task, time, resources)
- **Reports to the Waste Council**
- **Political decision on results**
- **Wide dissemination**



## *Present work*

---

- **Management of Biowaste**
  - Strategic study – Chain from customer via collection to treatment
- **Statistics**
  - Improving methods for collecting and analyzing
- **Recycling Centers**
  - Improving Safety, Service and Regional Coordination
- **Waste Management Plans**
  - Testing a Template to improve strategic focus and allow comparisons
- **Strategy for operational failure of Waste Plants**
- **School Information Strategy**



## *Conclusions*

---

- Key Factors:**
- **Clear Cut Action Programme**
  - **Mix of strategies and short term solutions**
  - **All actions accepted by the Waste Council, i.e the Public Waste organisations in the Stockholm Region**
  - **KSL gives administrative and political support**
  - **A common Regional Identity (Stockholm Region Waste Council)**
  - **Common tools: Web + Project Site**
  - **Strong political support**



[www.atervinningscentralen.se](http://www.atervinningscentralen.se)

---

[www.ksl.se](http://www.ksl.se)



---

■ **Regional Waste Action programme**

**5 main areas:**

- [1. - How to deal with everchanging regulations](#)
- [2. Future management of different waste fractions – strategies](#)
- [3. More efficient administration](#)
- [4. Spatial needs](#)
- [5. Operational failure of waste treatment plants – action plan](#)

- **(6. Public Communication and Behaviour Changing Activities)**

